

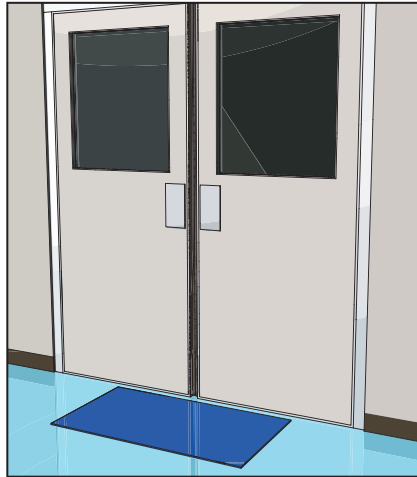
Ideal for

- Semiconductor factories
- Electronics manufacturing
- Precision instruments manufacturing
- Food manufacturing
- Packaging material plants

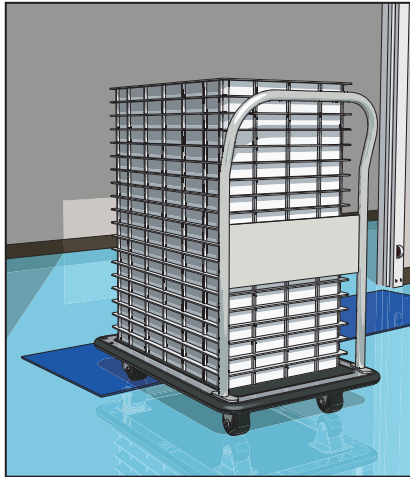
- Printing industry
- Painting industry
- Pharmaceutical plants
- Medical care facilities

etc

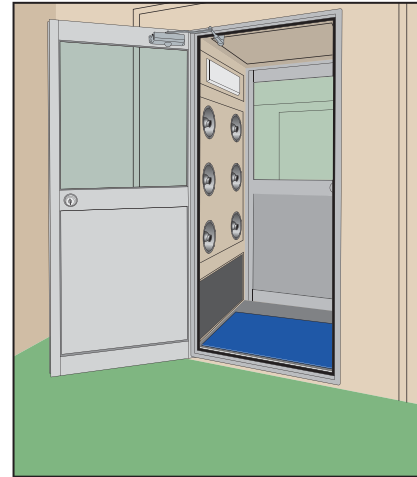
Applications



Placed at the entrance of a clean rooms



Used for cleaning trolley wheels



Installed in air shower booths

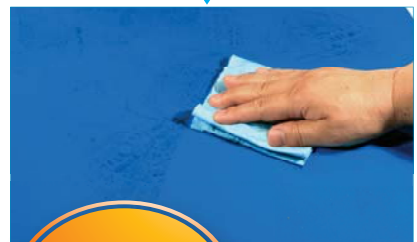
Features



- As both sides are adhesive, "Clean Walker" can be placed on either side. Its effectiveness is not affected by how it is placed.



- Intrinsic adhesive property of the polymer catches and collects dust and dirt. Its elastic surface gets into the grooves of shoe soles and cleans them effectively.



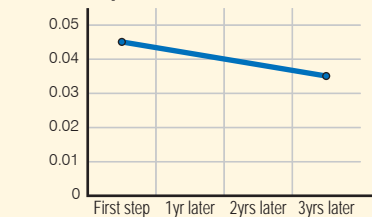
- When the surface becomes dirty, just wipe it with a damp cloth to remove extraneous matters. Adhesive power returns when dried.

Just wiping with a mop will do!

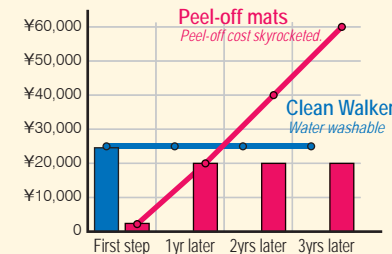
- For heavy-traffic worksites or wide doorways, multiple mats can be placed together because "Clean Walker" does not have any framing or non-adhesive area at the corners.

Reusable and cost saving

Adhesive power (N/25mm)



Comparing the total running costs



Conventional peel-off mats require a yearly running cost.

If you replace them with "Clean Walker"

- ★ Even after 3-year use, its adhesive power is virtually intact.
- ★ "Clean Walker" only requires the initial cost. It pays back in about a year when compared to peel-off mats.

Note: The values given in this catalog were obtained in our measurement environment. Your results may differ depending on the operating environment.

Distributed by

DOU YEE
ENTERPRISES

2304 Bedok Reservoir Road, Bedok Industrial Park C, Singapore 479223
t: (65) 6444 2678 | f: (65) 6743 7172 | e: S4_marketing@douyee.com.sg
Web: www.douyee.com

Printed in Japan
10070121.03

Ultimate clean,
Simple and repeatability,
Better cost-performance

Japan Technology

Clean Walker

Reusable Sticky Mat No. CW-900B EDP No. 621485

First in the industry

Soft and thick Polyurethane Gel effectively collects dust particles and non self-contamination.



"One small step for man,
one and only for Clean Walker."

RoHS

"Clean Walker" does not contain the banned substances specified in RoHS.

Non-proliferation of self-contamination.
More efficient dust collect. Life effective Eco mat.

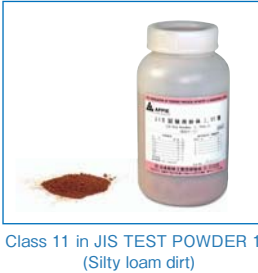
● Color: Blue ● Size: 500×900×5mm ● Weight: Approximately 2.4 kg

Eco Eco-friendly product

Made in Japan

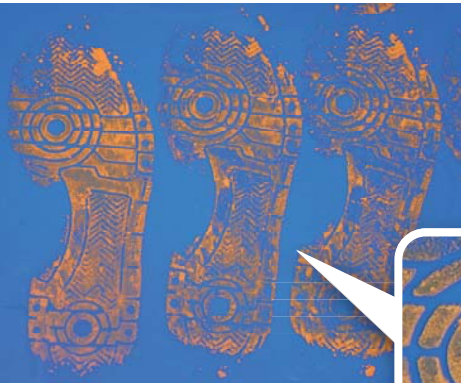
Q. How effective to the stickiness life comparing to regular peel-off mats?

Measurement methods of “JIS Z 0237 Testing Methods of Pressure-Sensitive Adhesive Tapes and Sheets” are not applicable as the subject material differs in thickness.
Presented below are the results of an adherence test where we evaluated the effectiveness of each type of mats by using “Class 11 in JIS TEST POWDER 1,” which used for JIS test.



● Dirt on the shoe soles

Clean Walker



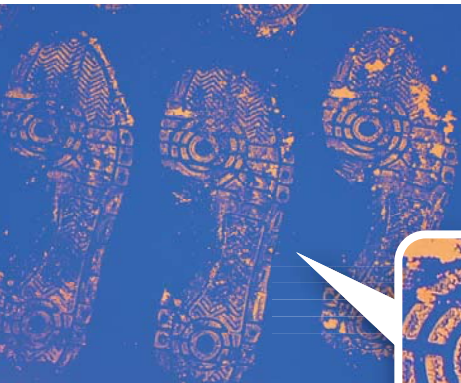
It shows sharp patterns of the shoe sole!



After 10-time steps on “Clean Walker”

The shoe sole looks whiter as “Clean Walker” collected dirt even in these tiny grooves.

Conventional peel-off mats



The patterns of shoe sole are uneven.



After 10-time steps on a peel-off mat

Dirt in the grooves has not been collected and left on the sole.

● Dirt on the trolley wheels

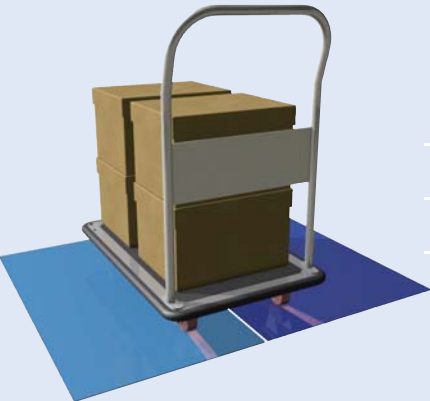
Clean Walker

Even the edges of the wheel have become clean.



Conventional adhesive stick mats

Dirt on the wheel edges has not been properly collected.



With a “Clean Walker” and a peel-off mat placed side by side, the trolley was pulled over them with one wheel on each mat after having pull it over a loamy dirt.