

## MODEL: FC-S730-650(SUS)

### FEATURES

- Double Side Cleaning(2 upper and 2 lower C/R)
- Repeat, Auto Stop, and In-Line Function
- Front and Rear PDC IONIZER
- Displays operation status
- Supports multi- language (Korean, Chinese, English, Japanese , Deutsch)
- Adhesive Roll replacement cycle setting function
- Built-in counter function
- Cleaning Roller Open type

### ADVANTAGES

- Cleaning Roller OPEN & CLOSE



## Double-Sided SMCM MODEL: FC-M820-400

### FEATURES

- Removal of contaminants on both sides of bare board.
- Removal of contaminants on the back side of parts installed PCB
- Electrification prevention function is added to the cleaning roller that is made of high molecular polymer.
- PCB support guide
- PCB gap control device
- Automatic conveyor width adjustment device (FC-M810-400: Manual, FC-M820-400: Auto)
- Provide convenience through touch panel
- Supports multi- language (Korean, Chinese, English, Japanese , Deutsch)
- Provide various interfaces

### ADVANTAGES

- Automatic conveyor width adjustment device and PCB support guide
- Provide convenience through touch control panel and support multi- language (Korean, Chinese, English, Japanese , Deutsch)
- Removal of contaminants on both sides of bare board by using cleaning rollers that have electrification prevention function.
- Manage the static electricity with 4 ionizers(upper, lower, left, and right parts)



More models available upon enquiry

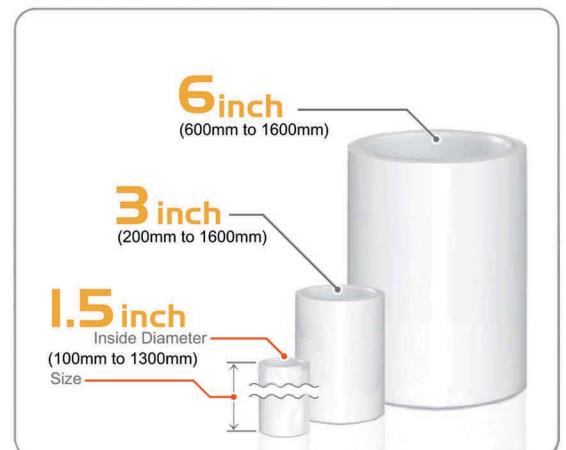
# Pre-Cutted $\Delta$ Adhesive Roll

### FEATURES

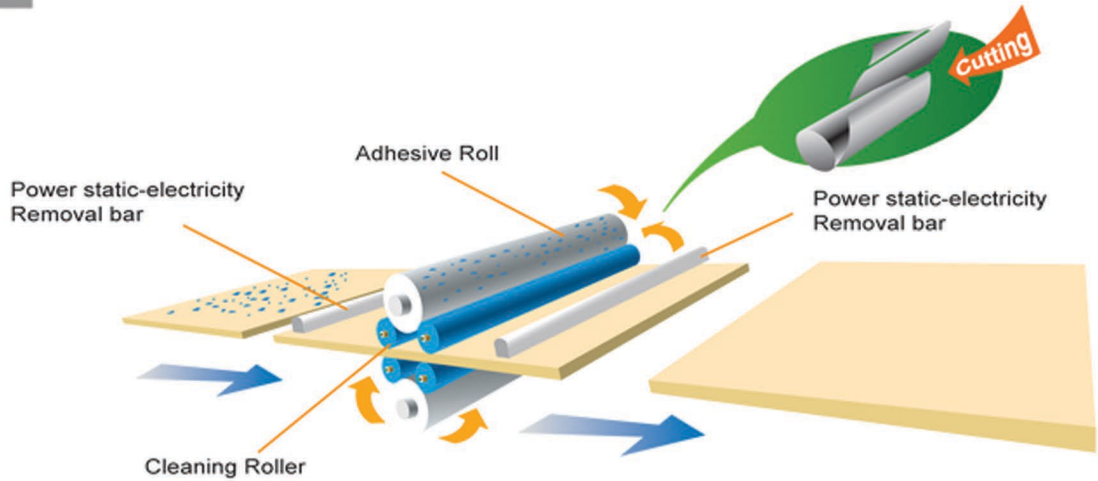
Pre-cutted adhesive roll with the best coating structure is specially developed by Tech-Line's own researchers, and it has improved adhesiveness and optimal rear layer. Since no tools or a knife is necessary, it ensures the operator's safety. Furthermore, the manufacturer can expect productivity improvement and cost-reduction due to reduction of managing time and paper saving.

### ADVANTAGES

- Quick management saves time (50% time saving)
- Pre-cutted adhesive roll minimize the paper waste(20% reduction)
- Not using a knife is safe for the operator
- Direction printed pre-cutted adhesive roll prevents faulty installation (Utility model registration)
- Special coating between paper and adhesive layer
- Stability of temperature and humidity
- Has static electricity prevention function



## MECHANISM



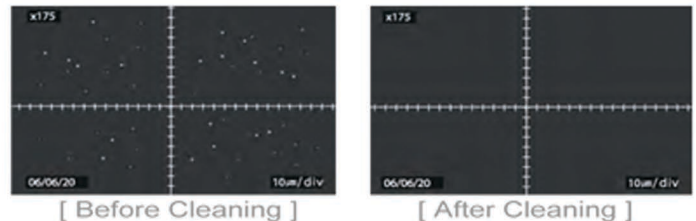
## PERFORMANCE

### The Capacity of Removing Static Electricity



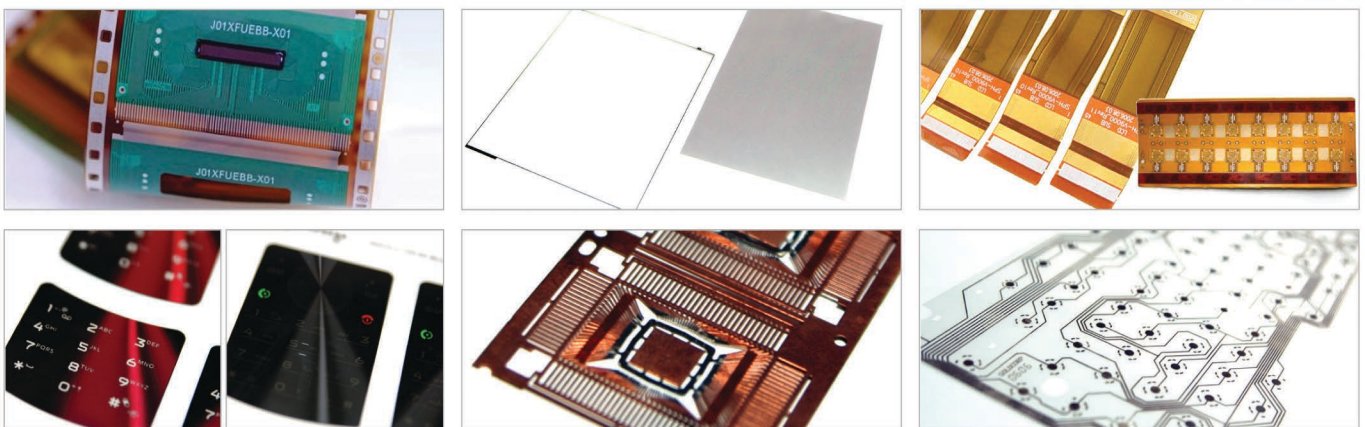
Measured value of charge plate monitor 156A(U.S.A TREK)confirmed to 3.1~1991 EOS/ESD Associaton Standard.

### The Capacity of Removing Dust and Particles



- 1) Checking Condition
  - ▶ Clean Room : 1,000 class/Temperature : 21.6℃ / Humidity : 45%
- 2) Measuring Equipment for the Capacity of Removing Dust and Particles
  - ▶ Standard Test Sample : 5 micron Glass Beads for Powder Painting Measuring Equipment
  - ▶ Inspection Equipment : Microscopic Photos(GI-4600, Japan)

## APPLICATIONS



**Remove several kinds of particles** : Hair / Clothing Fibers / Packing Fibers / Dust / Insert / Particles

- Electron** | PCB, Flexible board, Ceramic board, Membrane switch, LCD, PDP, Shadow mask, Lead frame, etc
- Printing** | Name plate, Key board, Automatic panel, Rear view mirror, Remote controller switch, Kind of cards, CD-ROM printing, etc
- Material Processing** | Plastic plate, Glass, Steel plate, Film(Acryl, PP, PET, etc), etc.