

# ESD Safe Vinyl Tiles

Affordable Quality Flooring

**EUROSTAT**<sup>®</sup>  
a member of DCU YEE  
**GROUP**



# Product Specification

## PHYSICAL PROPERTIES

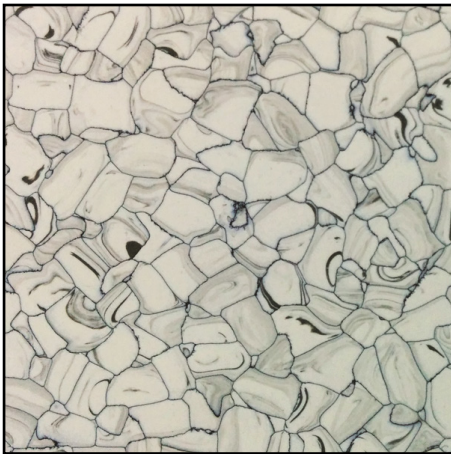
Properties	Specification	Test Method
Dimensions	610 X 610MM	Ruler Measurement
	900 X 900MM	
Thickness	Available: 2MM and 3MM	ASTM F 366 (Micrometer test)
Weight	Range: 2000 ~ 2200grams	Hanging weight scale

## MECHANICAL PROPERTIES

Properties	Specification	Test Method
Flammability: Flame Spread Index	Flame Spread Index: 49.5 ave	ASTM E162/ASTM E84
Smoke Development	Typical Values:	ASTM 662
	20mins: 371, Flaming	
	20mins: 616, Non-flaming No dripping, No running	
Critical Radiant Flux	Average: 1.05 w/cm <sup>2</sup>	ASTM E648/NFPA 253
Abrasion Resistance	≤ 0.02g/cm <sup>2</sup>	SJ/T 11236-2001
Flexibility	Min: 0.5" Diameter	CSA 126.2. 100 Specification
Outgassing	< 5ug/cm <sup>2</sup> Total Outgassing	Dynamic Headspace
Hardness	60 ± 5 Shore D	ASTM D2240
Static Load	125lbs, 0.25" diameter indenter, 24hrs: Indentation: 0.157MM (5%) max	ASTM F970 125lbs, 0.25" diameter: Indentor foot, 24hrs, Residual indentation.
	700lbs, 1.125" diameter indenter, 24hrs: Indentation: 0.052MM (2%) max	700lbs, 1.125" diameter: Indentor foot, 24hrs, Residual indentation
Stain Resistance	Avoid exposure to: Machine oil, Ink, Acetone	12 Common chemicals, surface drop, 24hrs dwell, wash, polish, visual inspect
Squareness (Skew)	0.01" (0.254MM)	L-Square Method, 24" X 16". Measure maximum skew gaps by feeler gage
Tile to Tile edge joining	No tile-to-tile joining gaps	Visual check
Visual Defects	Flaws such as scratches, holes, smears, cracks, other vinyl chips, foreign matter, or excessive black spots, etc... are not acceptable	Visual check
Tiles Corners	Corners should not be rounded, chipped, bended or abraded. No visible color tone difference tile-to-tile	Visual check
Surface	Top: Polished, gloss finish Bottom: Abraded, rough textured	Visual check
ROHS	Compliant	SGS Test Methods
Combustion Performance	Grade FV-0: ≤ 10seconds	SJ/T 11236-2001
Dimensional Change on Heating	≤ 0.20%	SJ/T 11236-2001
Residual Depression Degree	≤ 0.15MM	SJ/T 11236-2001

**ELECTRICAL PROPERTIES**

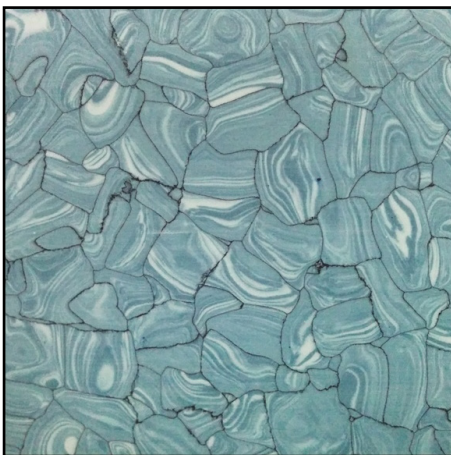
Properties	Specification	Test Method
Electrical Resistance	$2.5 \times 10^4$ to $1.0 \times 10^6$ ohms	SJ/T 11236-2001
Volume Resistance	$< 1.0 \times 10^6$ ohms	SJ/T 11236-2001
Static Generation	$< 25$ volts	With conductive footwear at 20% RH
Static Decay	$\pm 1000 \sim \pm 100V$	IEC 61340-5-1
	$\leq 2$ seconds	
Triboelectrification Voltage	$< 100V$	SJ/T 10694-2006



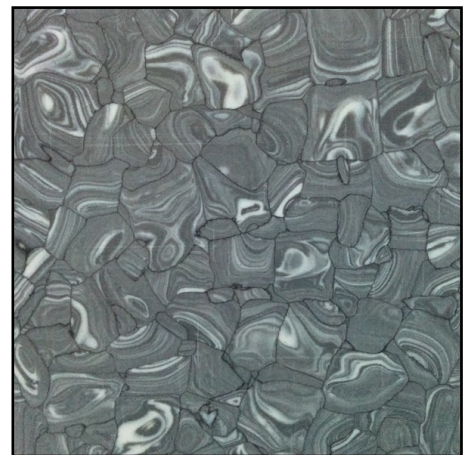
EST-1408



EST-0506



EST-0509



EST-0511





**DOU YEE**  
ENTERPRISES

Dou Yee Enterprises (S) Pte Ltd - HQ  
2304 Bedok Reservoir Road,  
Bedok Industrial Park C,  
Singapore 479223  
Tel: +65 6444 2678  
Fax: +65 6743 7172  
Web: [www.douyee.com](http://www.douyee.com)  
Email: [s2\\_marketing@douyee.com.sg](mailto:s2_marketing@douyee.com.sg)