

# Full Forced Convection Reflow Soldering System SMT Quattro Peak® S Media



The QP S Media distinguishes itself through **high process stability** and **long life cycle**. Innovative developments such as the flux cleaning system “ABS” ensure high system uptime.

## Benefit from:

- 28 years experience in Reflow technology
- **Precise nitrogen control** by integrated lambda sensor technology and real-time continuous measurement of residual oxygen value
- Maintenance free process gas cleaning system
- Fan units more than **10 years** gas-tight and **maintenance free**
- Lowest energy and media consumption

## Basic configuration:

- Bottom side heating
- Acoustic warning signal (buzzer)
- Nitrogen version
- Chain conveyor
- Adjustable center board support(CBS)
- ABS - process gas cleaning system
- Transport width adjustment, programmable
- Handling interface, SMEMA
- 1 cooling stage

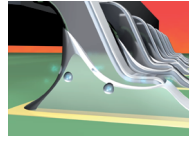
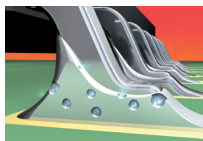
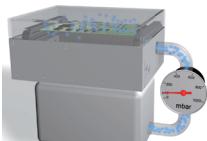
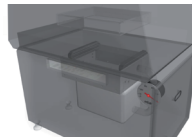
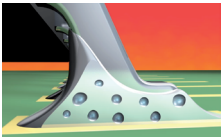
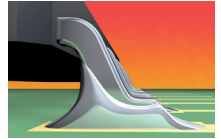
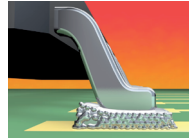
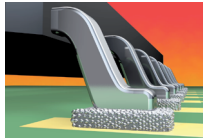
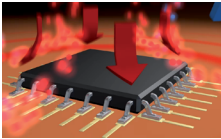
# SMT Vacuum Reflow

## Vacuum Reflow Soldering System

Improve the quality of solder joints by minimizing voids in them. Customize the length of the heating-, cooling- and Vacuum stage based on your process requirements.



Vacu  
Techno  
since 20



SMD-Reflow  
Soldering



Vacuum  
Soldering



Coating  
+ Curing



# Soldering System

um  
logy  
009



## Customer Benefits

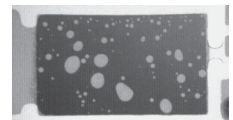
- Inclusions/voids will be reduced up to 99%
- Double sided PCB possible
- Small PCB with carrier
- Setting parameter: Time until sub-pressure, holding time, sub-pressure, venting time, sub-pressure
- Only one sealing surface of the vacuum chamber
- Small footprint
- No increase in nitrogen consumption

## Features

- Soldering with normal atmosphere
- Soldering with nitrogen (connectable)
- Soldering with vacuum (connectable)



**with vacuum**



**without vacuum**

Temperature  
Treatment



Hot and Cold  
Function Tests



Customized  
Solutions



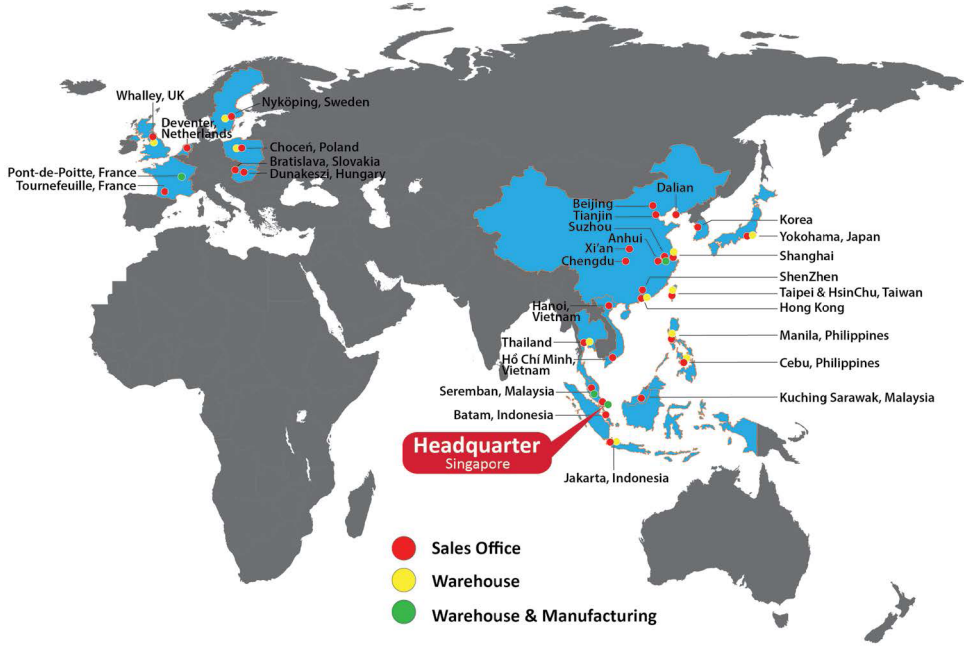
# Global Networks

**DOU YEE**  
ENTERTAINMENT

## HEAD OFFICE - SINGAPORE

2304 Bedok Reservoir Road Bedok Industrial Park C Singapore 479223

Tel: (65) 6444 2678 | Fax: (65) 6743 7172 | Email: s3\_marketing@douyee.com.sg



## China

### Shanghai

3rd Floor, Block C, Hi-Tech Industrial Center, No. 501, JinGang Road, JinQiao, PuDong New Area, ShangHai 201206 China.  
Tel: +86-21-5899 4619  
Fax: +86-21-5899 4618  
Email: dysh@douyee.com.cn

### Suzhou

No. 58, West Shen Hu Road, Suzhou Industrial Park, 215123 China.  
Tel: +86-512-6258 5066  
Fax: +86-512-6258 5366  
Email: ongcc@douyee.com.sg

### Beijing

#6010, Block 2, Chunlan Building, No.88, Nan San Huan road (west), Feng Tai District, Beijing 100070 China.  
Tel: +86-10-8368 6931  
Fax: +86-10-8368 7651  
Email: dybj@douyee.com.cn

### Tianjin

#202, SenTe Building, YuRong Garden, JinZhong River Street, HeBei District TianJin.  
Tel: +86-22-2642 2093  
Fax: +86-22-2642 2023  
Email: dytj@douyee.com.cn

### Dalian

#607, No.263, Huanghe Road, Xigang District, Dalian 116011 China.  
Tel: +86-411-8377 9121 / 9193  
Fax: +86-411-8369 5216  
Email: dydl@douyee.com.cn

### Chengdu

Unit #C1409, XieWang Building, No. 9, XieDu Road (South), 1<sup>st</sup> Avenue, ChengShuang Section, ChuanZang Road, WuHou District, ChengDu 610043 China.  
Tel: +86-28-8501 7691  
Fax: +86-28-8501 7693  
Email: dycd@douyee.com.cn

### Xi An

#401, Unit 3, Block 8, No.306, JiXiang Road, Southern suburb, XiAn 710063 China.  
Tel: +86-29-8824 7085  
Fax: +86-29-8824 7085  
Email: dyxa@douyee.com.cn

### Anhui

#2607, Block 7, West Ring Central Plaza, Huangshan Road (West), Shushan District, Hefei 230000 China.  
Tel: +86-21-5899 4619  
Fax: +86-21-5899 4618  
Email: dyah@douyee.com.cn

## Shenzhen

Unit #13-F, JinSong Building, Terra 4th Road, Che Gong Miao, FUTian District, ShenZhen 518040 China.  
Tel: +86-755-8389 0255  
Fax: +86-755-8389 0675  
Email: dysz@douyee.com.hk

## Taiwan

### Taipei

5F-2, No. 328, Chang Chun Road, 104 Taipei, Taiwan.  
Tel: (886) 2 2715 1156  
Tel: (886) 2 2712 8570  
Email: deamer.wu@douyee.com.tw

### HsinChu

Rm. 1, 20F., No.295, Sec. 2, Guangfu Rd., Hsinchu City 30071, Taiwan.  
Tel: (886) 3571 1618  
Fax: (886) 3571 1619  
Email: deamer.wu@douyee.com.tw