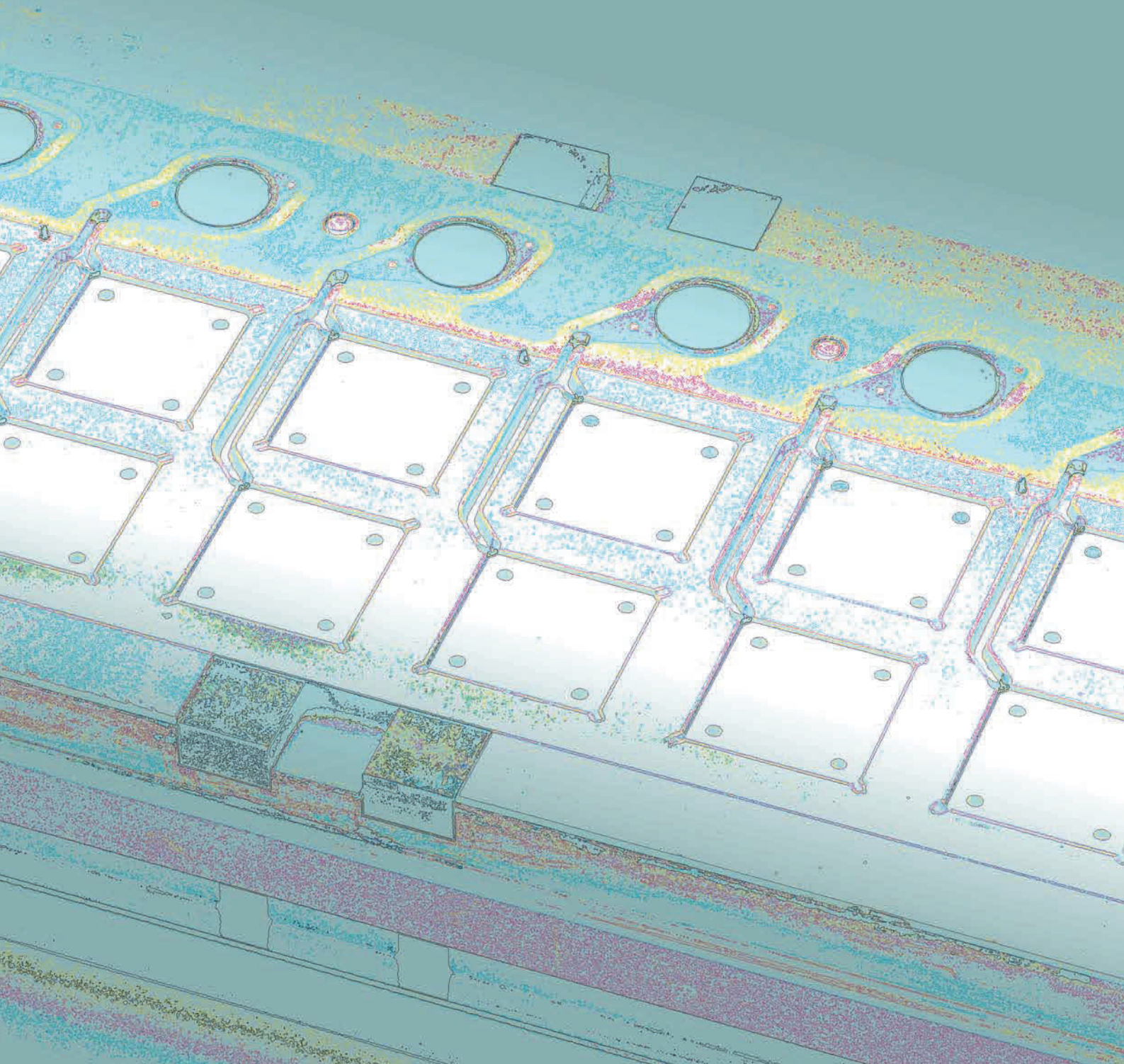


# NIKALET RCC

RUBBER BASED MOLD CLEANER



NIPPON CARBIDE INDUSTRIES CO.,INC.

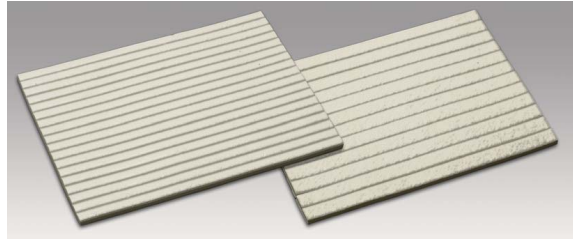


DOU YEE ENTERPRISES (S) PTE LTD

# NIKALET RCC

## NIKALET RCC (Rubber Type Cleaner)

The cleaning sheet NIKALET RCC is a mold rubber type cleaner for the removal of mold stains which happen during the molding epoxy molding for encapsulation of semiconductors such as integrated circuits, diodes, transistors, etc.



### Property of NIKALET RCC (Cleaning Compound)

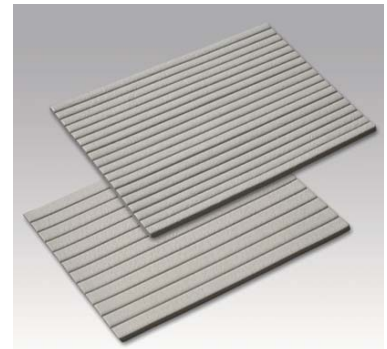
		ID	IE	IJ
Appearance		White	White	White
Specific Gravity		1.1-1.2	1.1-1.2	1.0-1.1
Molding Method		Compression	Compression	Compression
Viscosity <sup>1)</sup>	M	45-55	75-85	65-75
Releasability <sup>2)</sup>	1-5	4	5	4
Odor <sup>3)</sup>	1-5	4	4	1
Expansion <sup>4)</sup>		mm 90—110		

1) Viscosity : Mooney Viscometer SMV-300RT(SHIMADZU)  
Temp : 100°C Mooney time 4min, Rotor Speed 2.0rpm, Preheat Time 1min

2) Releasability : It evaluated by five stages. 5th is easy remove.  
3) Odor : It evaluated by five stages. 1st is few smell, 5th is strong odor.  
4) Evaluation method : Disk flow, Sample size φ36mm, 7mm (thickness)  
Temp : 175°C Clamping pressure: 30kg/cm<sup>2</sup>, Cure time : 300sec

## NIKALET RCC (Rubber Type Conditioner)

The rubber type conditioner is a mold conditioning compound for the mold dies after cleaning process in molding for EMC encapsulations of semiconductors.



### Property of NIKALET RCC (Rubber conditioner compound)

		LB	LF
Appearance		Gray	Gray
Specific Gravity		1.0-1.1	1.0-1.1
Molding Method		Compression	Compression
Viscosity <sup>1)</sup>	M	70-85	75-90
Releasability <sup>2)</sup>	1-5	4	5
Odor <sup>3)</sup>	1-5	3	2
Expansion <sup>4)</sup>		mm 90—110	80—100

1) Viscosity : Mooney Viscometer SMV-300RT (SHIMADZU)  
Temp : 100°C Mooney time 4min, Rotor Speed 2.0rpm, Preheat Time 1min

2) Releasability : It evaluated by five stages. 5th is easy remove.

3) Odor : It evaluated by five stages. 1st is few smell, 5th is strong odor.

4) Evaluation method : Disk flow,  
Sample size φ36mm, 7mm (thickness)  
Temp : 175°C  
Clamping pressure: 30kg/cm<sup>2</sup>,  
Cure time : 300sec

### Sheet Size

Item	Type-1	Type-2	Type-3
Length (mm)	185	210	240
Width (mm)	180	180	180
Thickness (mm)	5/7	5/7	5/7
Slit (mm)	10/15	10/15	10/15

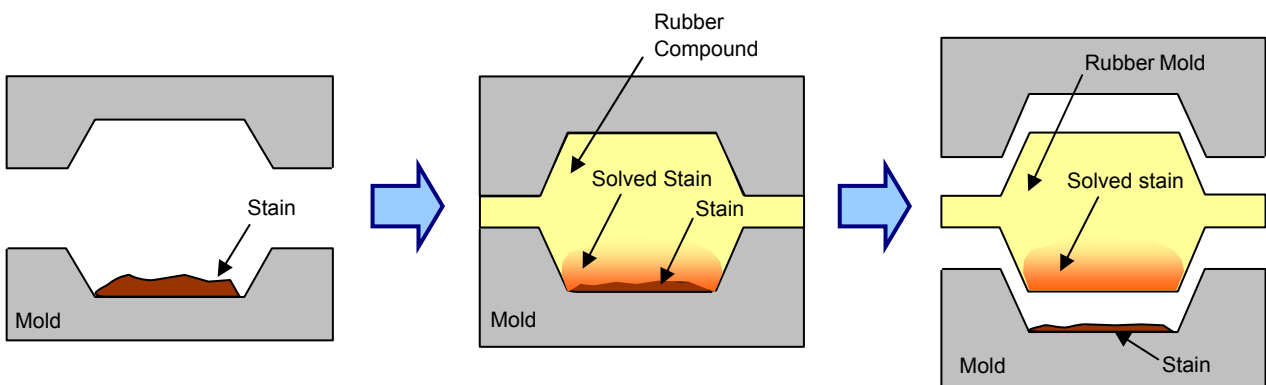
Packing:10kg

## Molding Conditions

Mold Temperature	160-190 (.)
Cure Time	2-5 (min)
Clamping Force	8-60 (Ton)
Mold Gap	1-2 (mm)

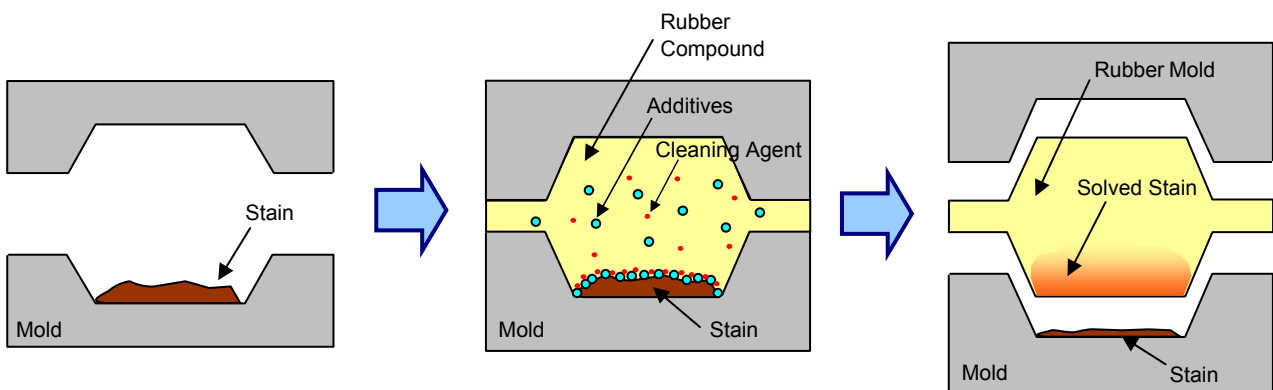
## Cleaning Scheme

### a: Dissolution Effect



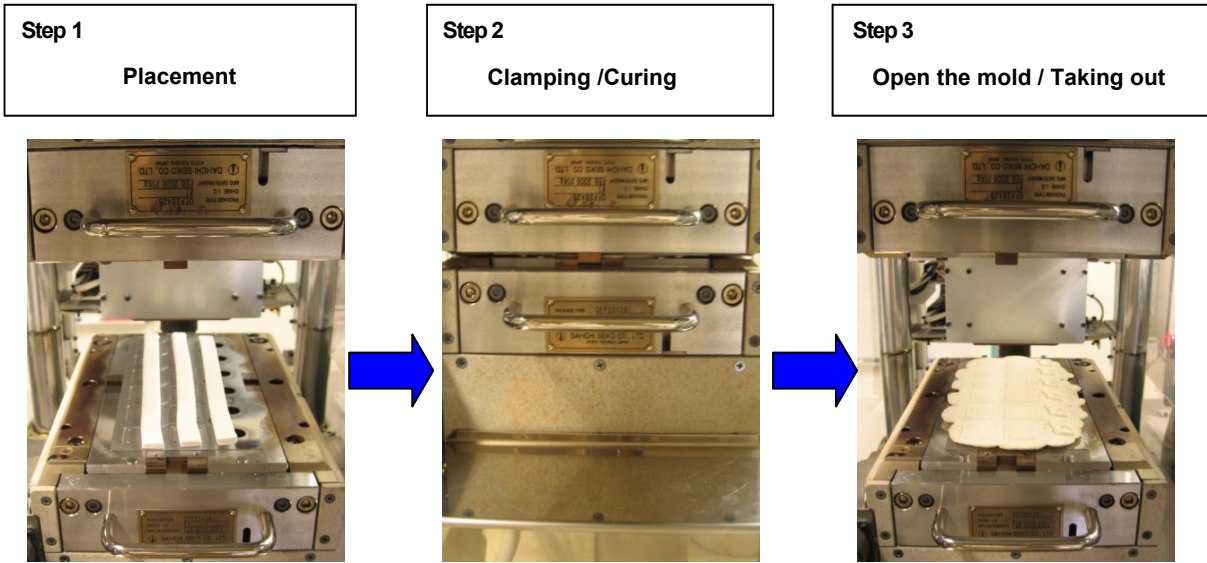
Cleaning agent dissolve the stain on the mold surface. The dissolved stain together with the cured rubber is able to release from mold surface

### b: Additives Effect



Additives included in Nikalet RCC increases the cleaning effect of the cleaning agent, hence more stain is being removed from mold surface.

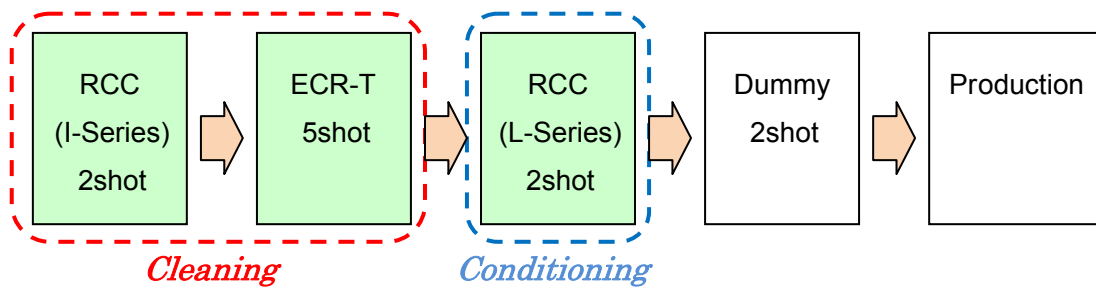
## How to use



## Our Recommendation Cleaning Procedure

Nippon Carbide Industries Co., Inc. recommends the cleaning process which is the combination using rubber type mold cleaner (NIKALET RCC) and transfer type mold cleaner (NIKALET ECR-T).

The details of the cleaning method to recommend are as follows;



## Shelf Life

To avoid degradation NIKALET RCC must be stored at under 25. with no direct sunlight or humidity. The shelf-life of NIKALET RCC under this condition is 6 months.